

Customer :

customer

Customer part :

customer part

Comment :

Comment

S1=0.04

S2=0.29

Tmax=439

Tp S2=478.0

PI=0.11

HI=85

Sample =10286.9

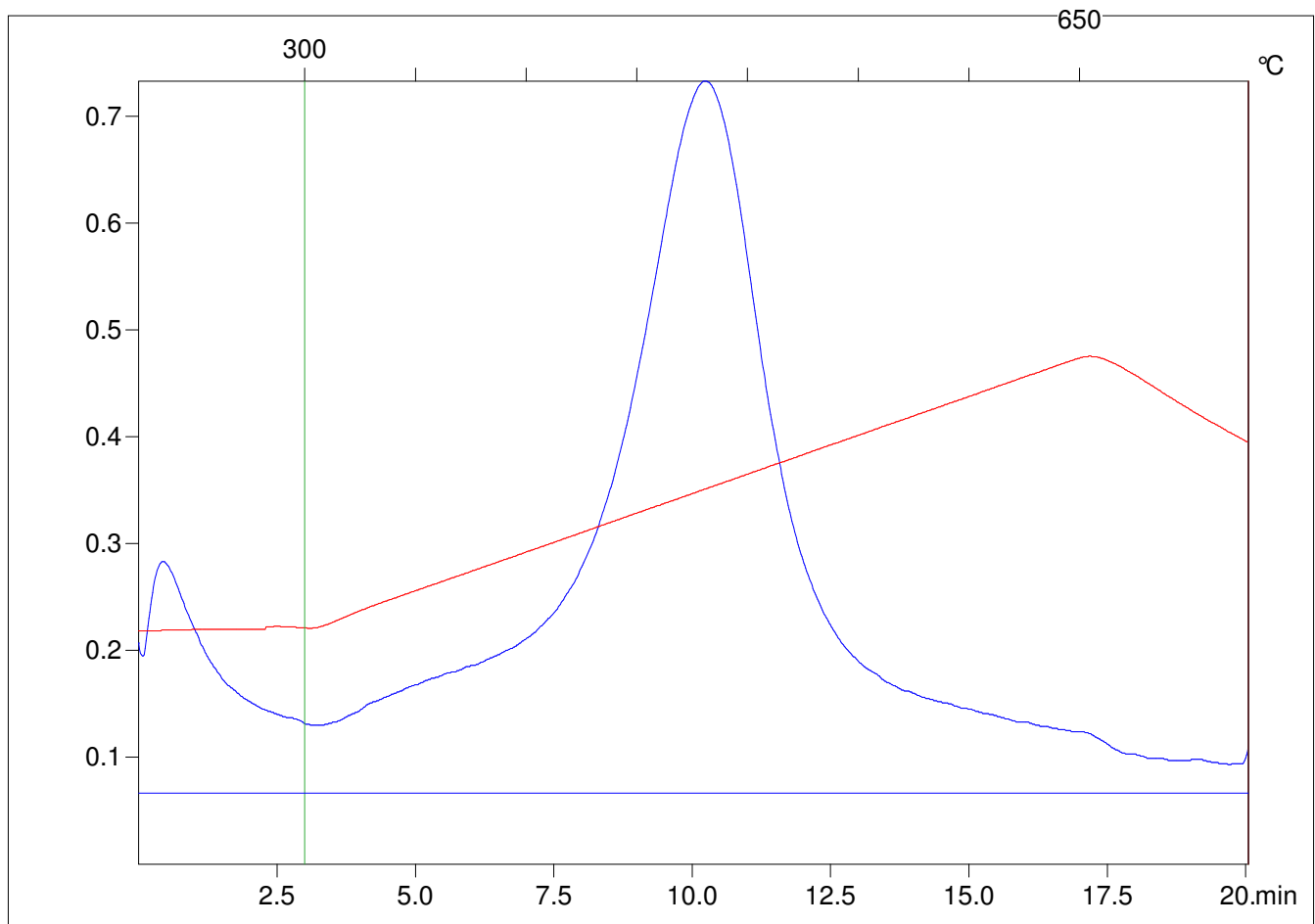
Method =Bulk Rock

Cycle=Basic

KFID(10*9)=1167

Qty =70.1

TOC=0.34



C:\VINC\PK141015\PK077.R00 : FID pyrolysis graphic

State

Pyro Status

Oxi Status